

JAY•LOR[®]

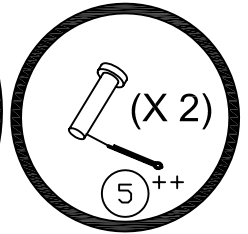
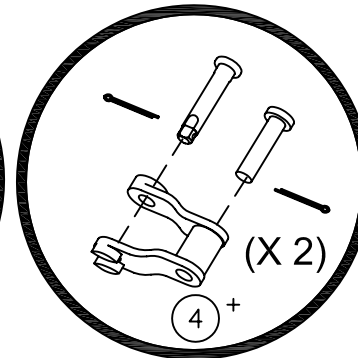
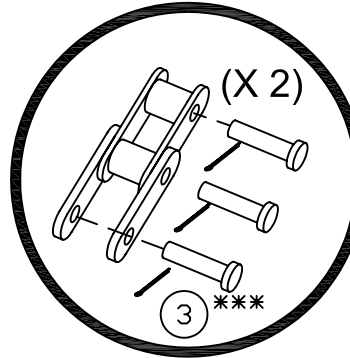
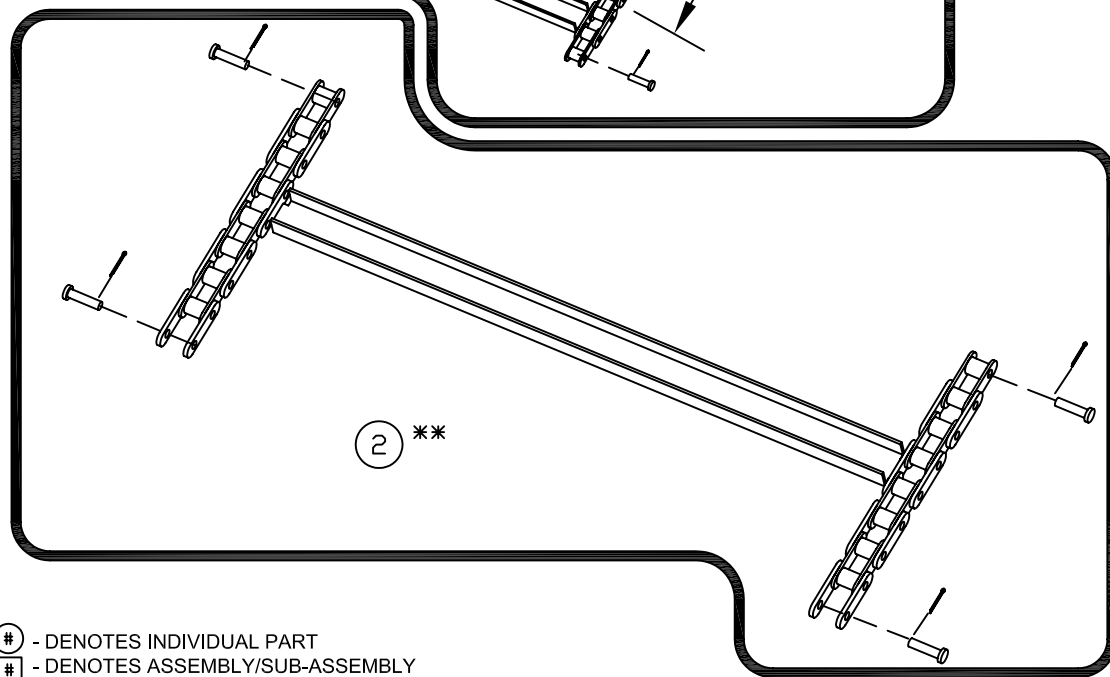
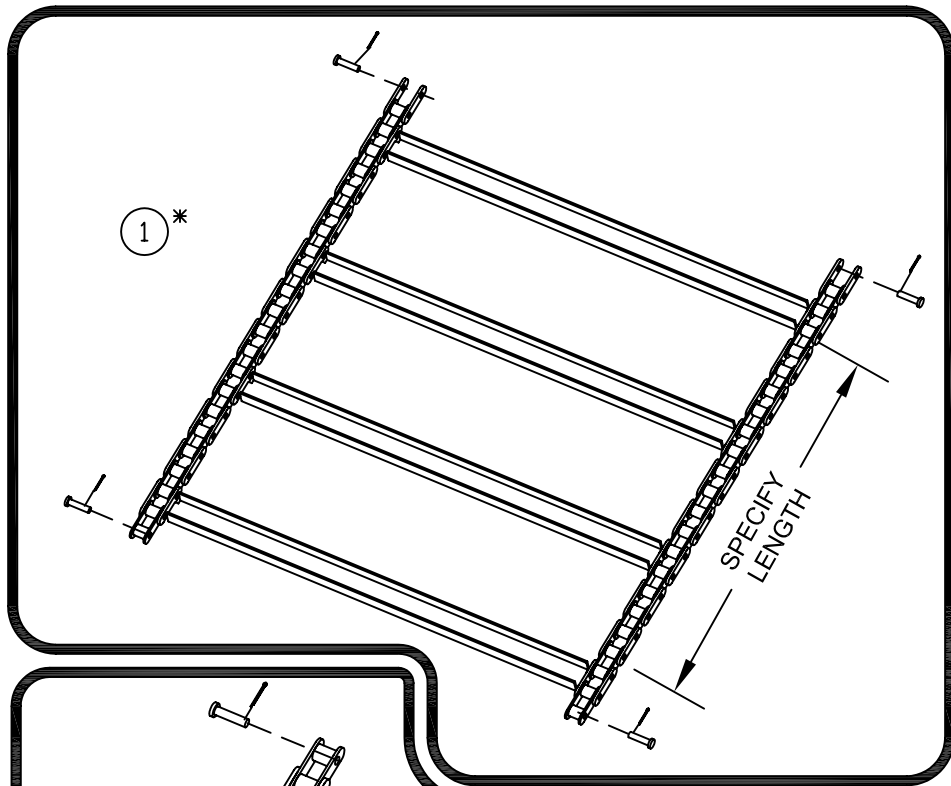
Cutter • Mixer • Feeder

06 - CONVEYOR

"Putting the 'Total' into TMR"

JAY-LOR[®] Fabricating Inc.
RR # 2 Orton, Ontario, Canada, L0N 1N0 Tel: (519) 787-8058 Fax: (519) 787-7053

To Print this Section, Click Here



IMPORTANT NOTE:

- * - P/N FOR ORDERING MORE THAN 1' OF APRON CHAIN.
 - ACTUAL MEASUREMENT ROUNDED UP TO NEAREST LINK.
 - ENDS OF APRON CHAIN SECTION LENGTH TO TERMINATE W/ CLOSED LINK @ ONE END, OPEN LINK @ OTHER END.
 - INCLUDES (4) CONNECTING PINS AND COTTER PINS.
- ** - P/N FOR ORDERING 1' SECTION OF APRON CHAIN ONLY.
 - USE THIS P/N FOR ORDERING A REPLACEMENT SLAT FOR APRON CHAIN ASSEMBLY.
 - ENDS OF 1' SECTION OF APRON CHAIN LENGTH TO TERMINATE W/ CLOSED LINK @ ONE END, OPEN LINK @ OTHER END.
 - INCLUDES (4) CONNECTING PINS AND COTTER PINS.
 - SECTION INCLUDES (4) LINKS TOTAL PER SIDE, AS SHOWN IN ILLUSTRATION.
- *** - COMPLETE LINK KIT INCLUDES (2) LINKS AND (6) CONNECTING PINS AND COTTER PINS.
- + - HALF LINK KIT INCLUDES (2) HALF LINKS, (2) STANDARD STANDARD CONNECTING PINS AND COTTER PINS, AND (2) HALF LINK SPECIFIC CONNECTING PINS AND COTTER PINS.
 - NOTE: SPECIFIC CONNECTING PINS REQUIRED TO FASTEN WIDE END OF HALF LINK ARE DIFFERENT FROM STANDARD CONNECTING PINS USED ELSEWHERE ON APRON CHAIN ASSEMBLY.
- ++ - CONNECTING PIN KIT INCLUDES (2) STANDARD CONNECTING PINS W/ (2) COTTER PINS.

⊕ - DENOTES INDIVIDUAL PART
 ⊞ - DENOTES ASSEMBLY/SUB-ASSEMBLY

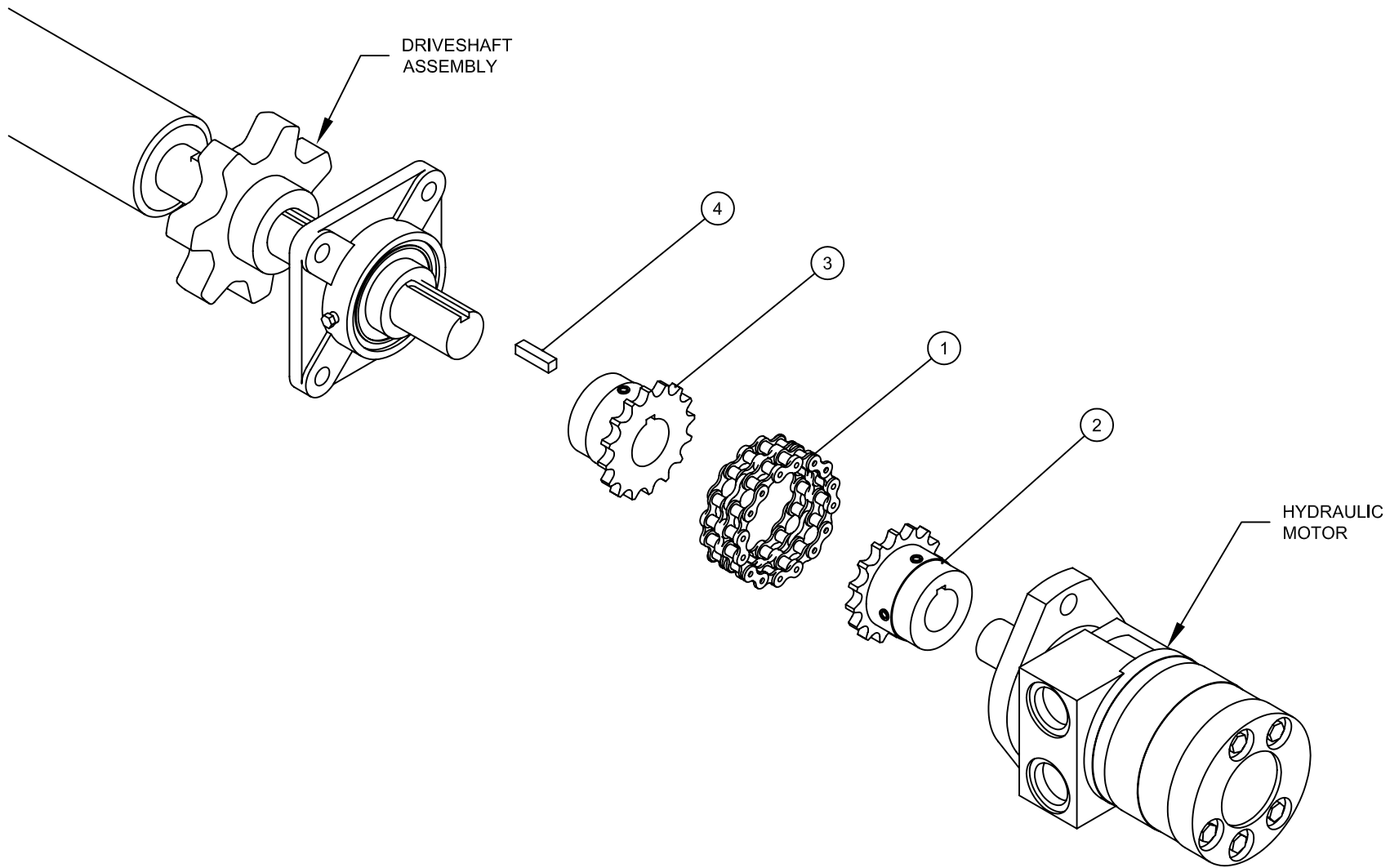
5	CONNECTING PIN KIT++	1	060-01-08
4	HALF LINK KIT+	1	060-01-07
3	COMPLETE LINK KIT***	1	060-01-06
2	1' APRON CHAIN SECTION W/ SLAT**	1	060-01-04
1	APRON CHAIN PER FOOT (C55 W)*	1	060-01-00
NO.	PART DESC.	QTY	PART NO.

PARTS LIST

MODEL:		ALL APPLICABLE	
DATE:	MAR 12/04	SHEET	1 of 1
PART/ASSEMBLY NO:	060-01-05		



TITLE: APRON CHAIN REPLACEMENT PARTS FOR DISCHARGE CONVEYOR ASSEMBLY (C-55 W STYLE CHAIN)



- DENOTES INDIVIDUAL PART
- DENOTES ASSEMBLY/SUB-ASSEMBLY

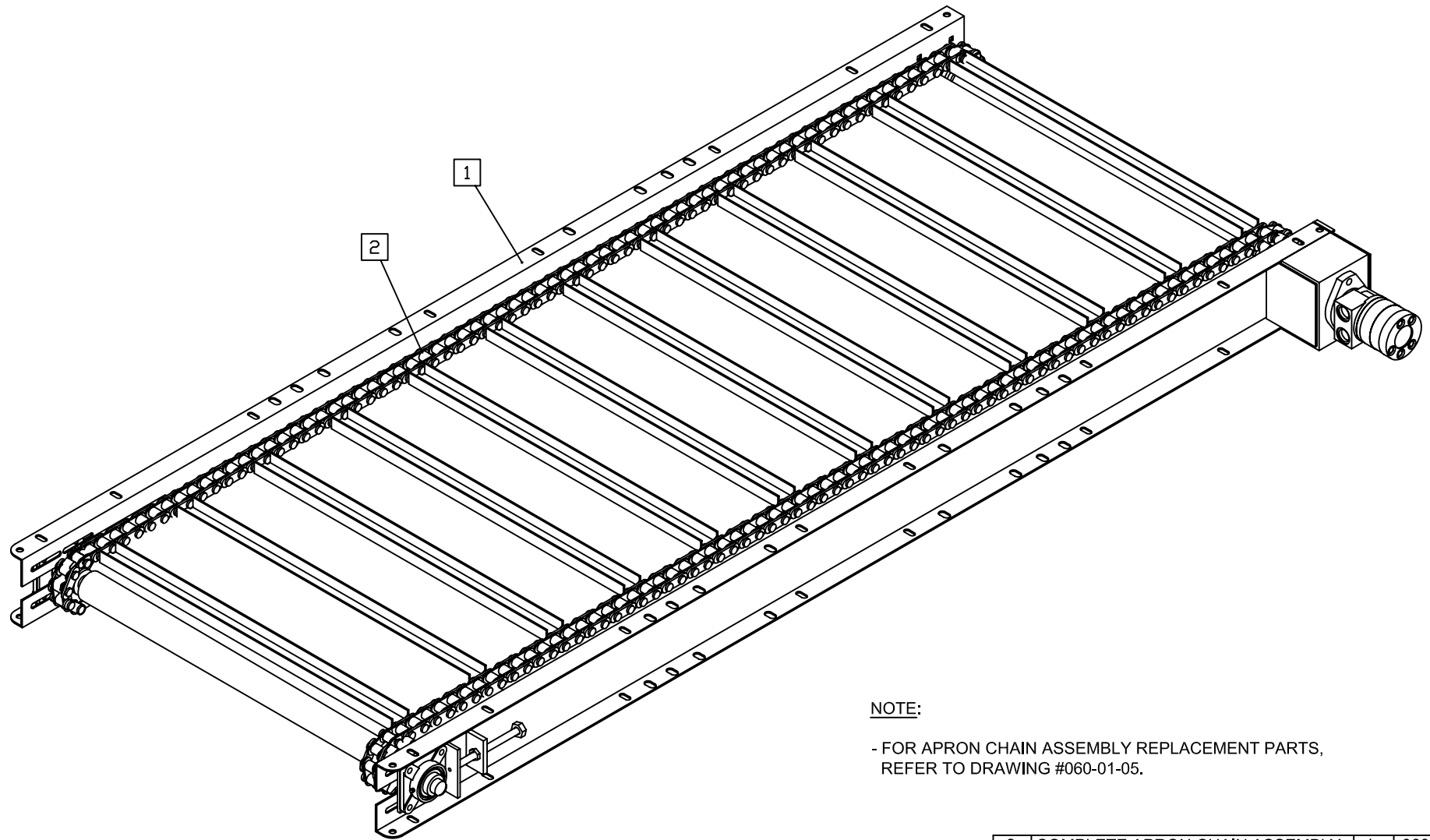
4	KEY	1	060-03-06
3	Ø1-1/8", 16-TOOTH SPROCKET	1	060-03-05
2	Ø1", 16-TOOTH SPROCKET	1	060-03-03
1	CONNECTING CHAIN (#40)	1	060-03-02
NO.	PART DESC.	QTY	PART NO.

PARTS LIST

MODEL:		ALL APPLICABLE	
DATE:	AUG 1/03	SHEET	1 of 1
PART/ASSEMBLY NO:		060-03-00	



TITLE: CONVEYOR CHAIN COUPLER DRIVE ASSEMBLY



NOTE:

- FOR APRON CHAIN ASSEMBLY REPLACEMENT PARTS,
REFER TO DRAWING #060-01-05.

- ⊖# - DENOTES INDIVIDUAL PART
- ⊖# - DENOTES ASSEMBLY/SUB-ASSEMBLY

2	COMPLETE APRON CHAIN ASSEMBLY	1	060-04-05
1	8' (96'') DUAL CONVEYOR W/O CHAIN	1	060-04-02
NO.	PART DESC.	QTY	PART NO.

PARTS LIST

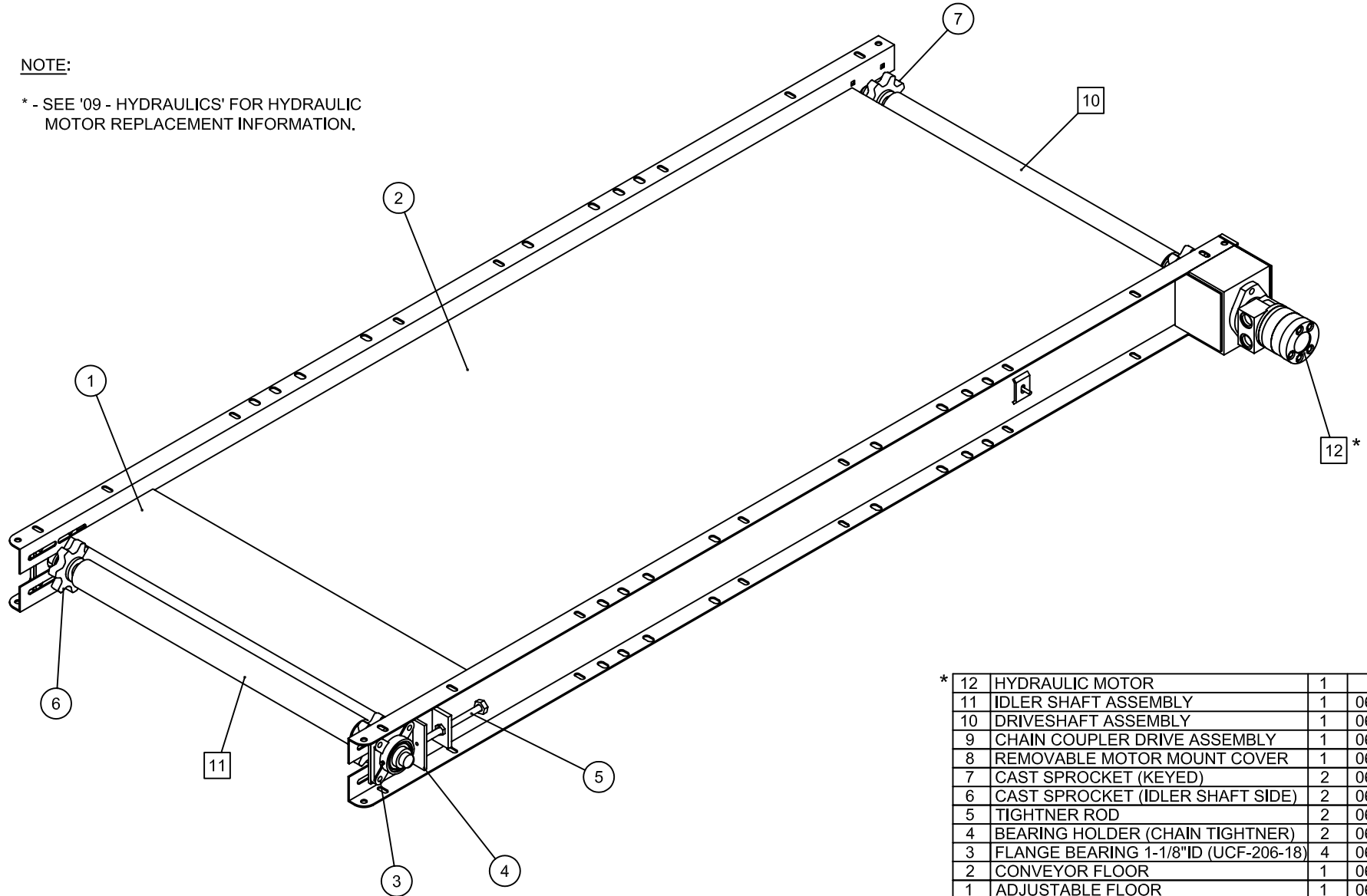
MODEL:		ALL APPLICABLE	
DATE:	AUG 1/03	SHEET	1 of 1
PART/ASSEMBLY NO:	060-04-01		



TITLE: 8' (96'') DUAL DISCHARGE CONVEYOR ASSEMBLY - COMPLETE W/O SHIELDS AND HOSES

NOTE:

* - SEE '09 - HYDRAULICS' FOR HYDRAULIC MOTOR REPLACEMENT INFORMATION.



* 12	HYDRAULIC MOTOR	1	
11	IDLER SHAFT ASSEMBLY	1	060-04-09
10	DRIVESHAFT ASSEMBLY	1	060-04-08
9	CHAIN COUPLER DRIVE ASSEMBLY	1	060-03-00
8	REMOVABLE MOTOR MOUNT COVER	1	060-00-32
7	CAST SPROCKET (KEYED)	2	060-00-30
6	CAST SPROCKET (IDLER SHAFT SIDE)	2	060-00-27
5	TIGHTNER ROD	2	060-00-22
4	BEARING HOLDER (CHAIN TIGHTNER)	2	060-00-21
3	FLANGE BEARING 1-1/8"ID (UCF-206-18)	4	060-00-20
2	CONVEYOR FLOOR	1	060-00-14
1	ADJUSTABLE FLOOR	1	060-00-01
NO.	PART DESC.	QTY	PART NO.

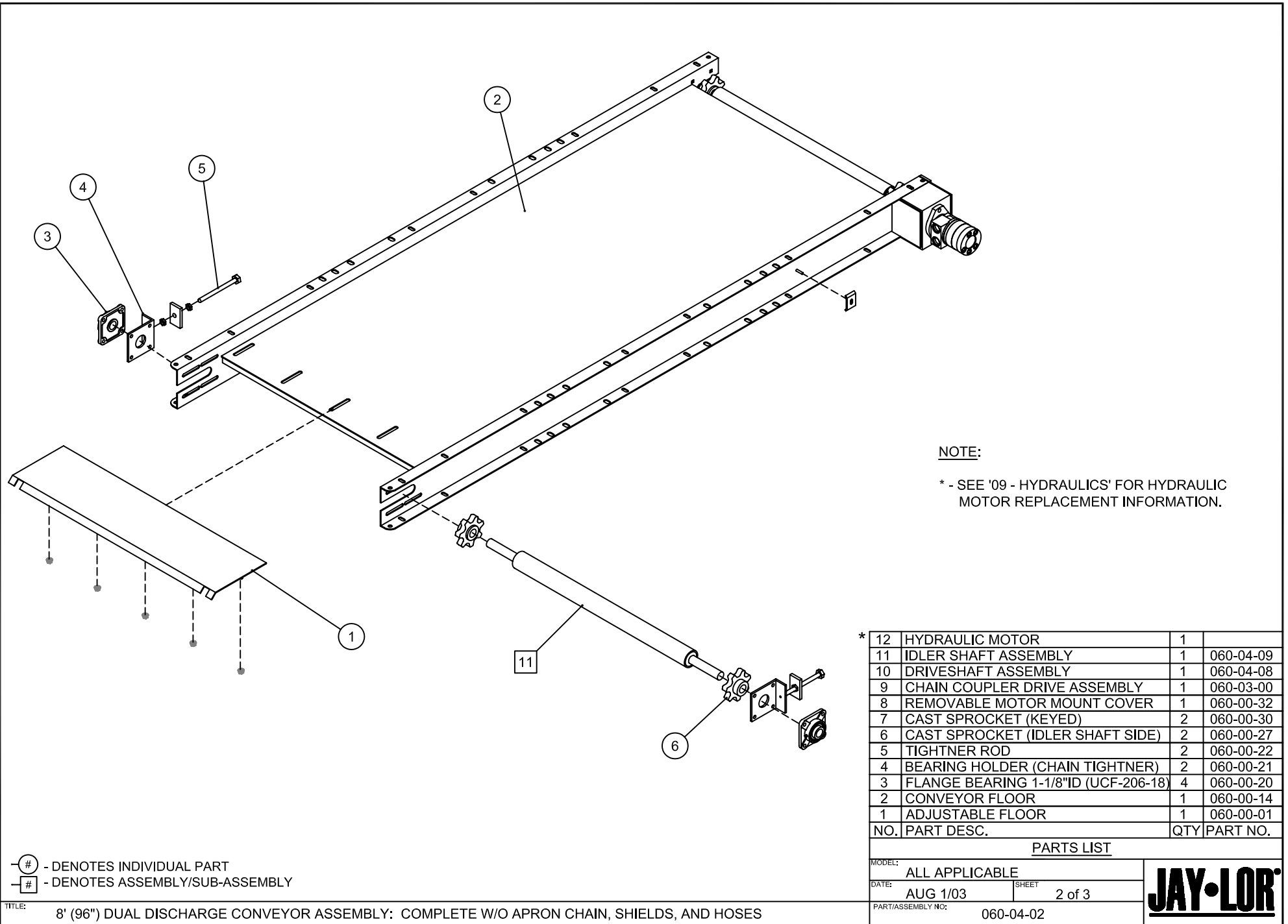
PARTS LIST

MODEL:	ALL APPLICABLE	
DATE:	AUG 1/03	SHEET 1 of 3
PART/ASSEMBLY NO:	060-04-02	



- ⊖ # - DENOTES INDIVIDUAL PART
- ⊖ # - DENOTES ASSEMBLY/SUB-ASSEMBLY

TITLE: 8' (96") DUAL DISCHARGE CONVEYOR ASSEMBLY: COMPLETE W/O APRON CHAIN, SHIELDS, AND HOSES



NOTE:

* - SEE '09 - HYDRAULICS' FOR HYDRAULIC MOTOR REPLACEMENT INFORMATION.

* 12	HYDRAULIC MOTOR	1	
11	IDLER SHAFT ASSEMBLY	1	060-04-09
10	DRIVESHAFT ASSEMBLY	1	060-04-08
9	CHAIN COUPLER DRIVE ASSEMBLY	1	060-03-00
8	REMOVABLE MOTOR MOUNT COVER	1	060-00-32
7	CAST SPROCKET (KEYED)	2	060-00-30
6	CAST SPROCKET (IDLER SHAFT SIDE)	2	060-00-27
5	TIGHTNER ROD	2	060-00-22
4	BEARING HOLDER (CHAIN TIGHTNER)	2	060-00-21
3	FLANGE BEARING 1-1/8"ID (UCF-206-18)	4	060-00-20
2	CONVEYOR FLOOR	1	060-00-14
1	ADJUSTABLE FLOOR	1	060-00-01
NO.	PART DESC.	QTY	PART NO.

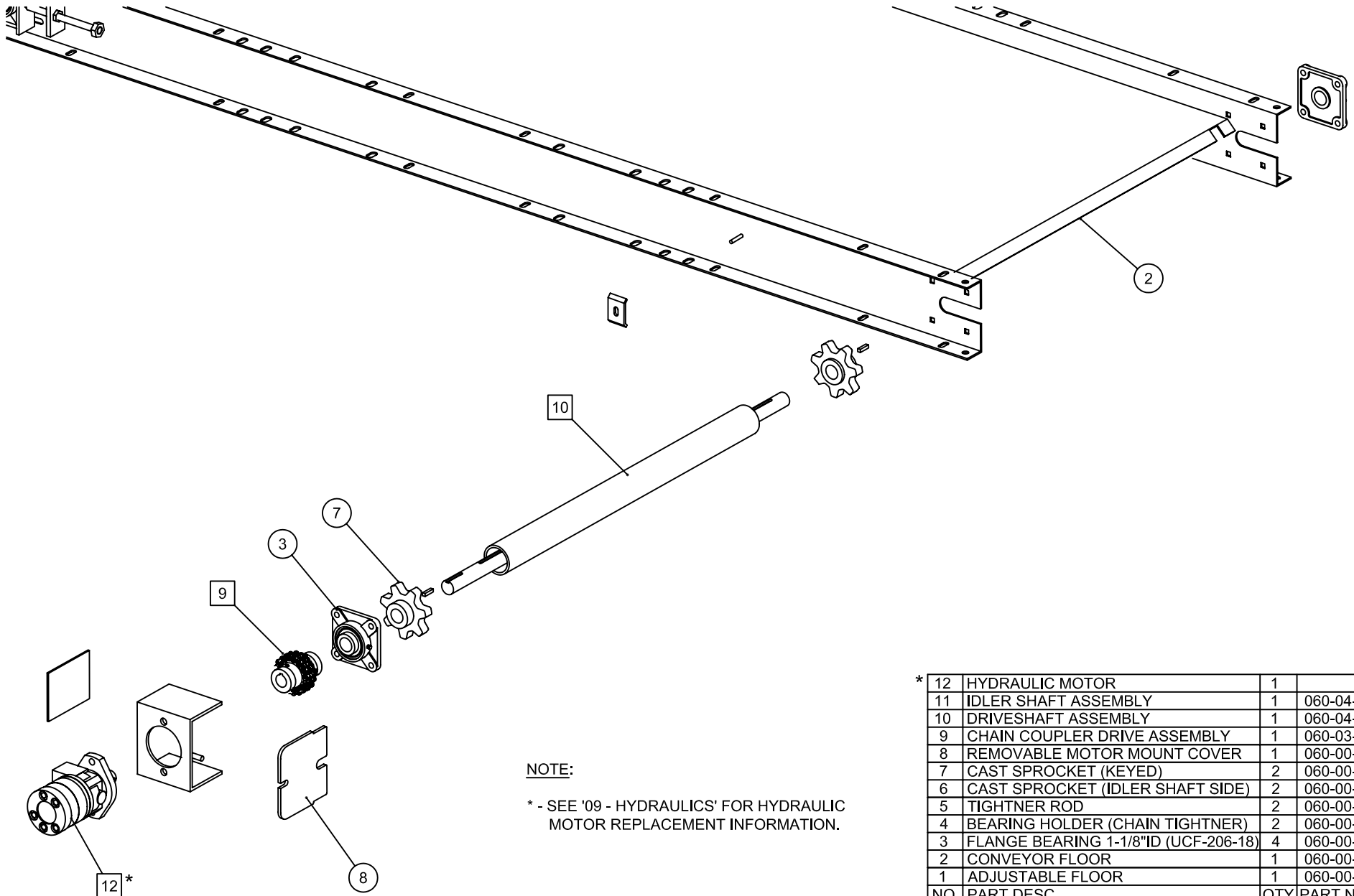
PARTS LIST

MODEL:	ALL APPLICABLE	
DATE:	AUG 1/03	SHEET 2 of 3
PART/ASSEMBLY NO:	060-04-02	



⊖ # - DENOTES INDIVIDUAL PART
 ⊖ # - DENOTES ASSEMBLY/SUB-ASSEMBLY

TITLE: 8' (96'') DUAL DISCHARGE CONVEYOR ASSEMBLY: COMPLETE W/O APRON CHAIN, SHIELDS, AND HOSES



⊖ # - DENOTES INDIVIDUAL PART
 ⊖ # - DENOTES ASSEMBLY/SUB-ASSEMBLY

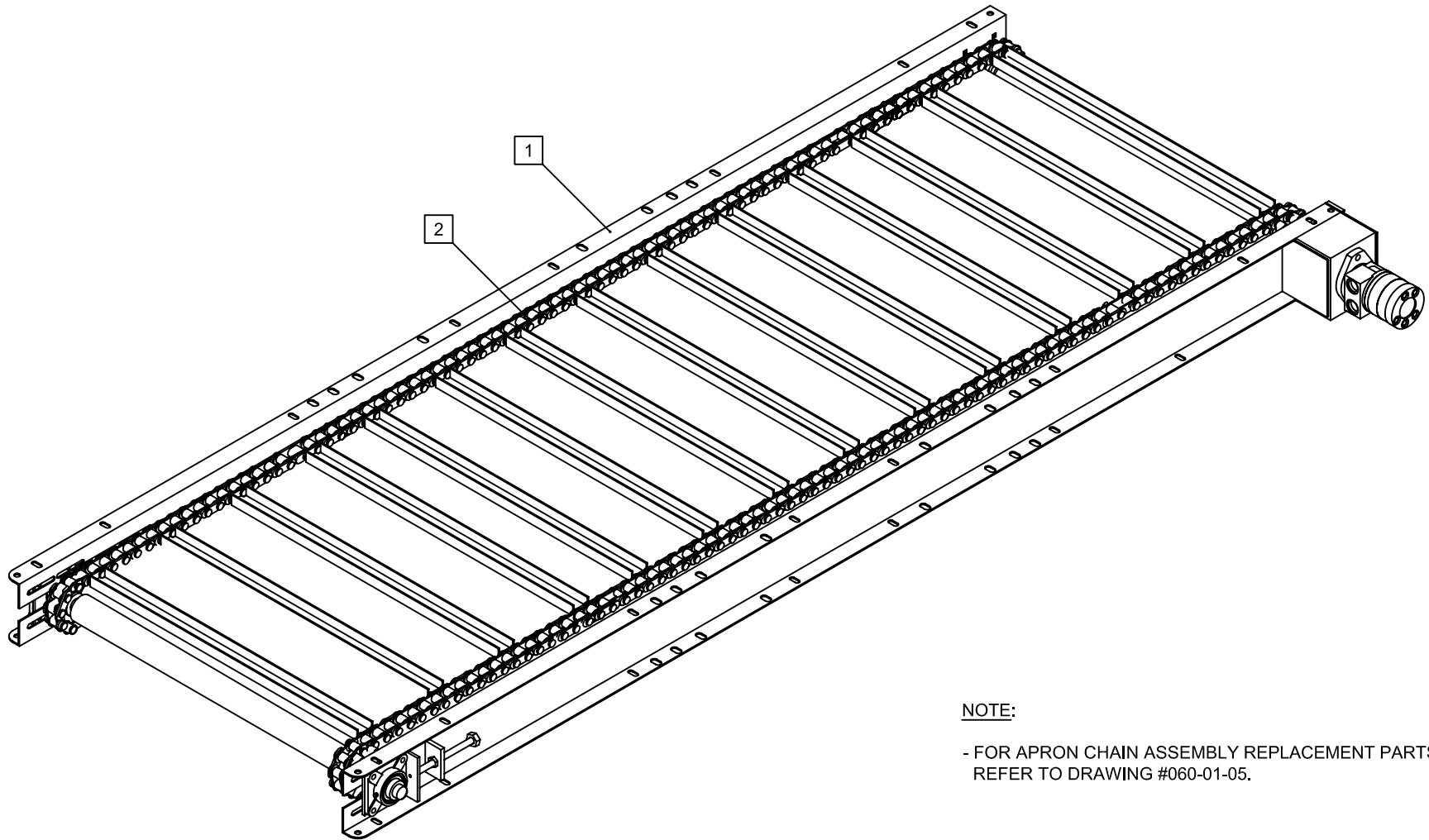
* 12	HYDRAULIC MOTOR	1	
11	IDLER SHAFT ASSEMBLY	1	060-04-09
10	DRIVESHAFT ASSEMBLY	1	060-04-08
9	CHAIN COUPLER DRIVE ASSEMBLY	1	060-03-00
8	REMOVABLE MOTOR MOUNT COVER	1	060-00-32
7	CAST SPROCKET (KEYED)	2	060-00-30
6	CAST SPROCKET (IDLER SHAFT SIDE)	2	060-00-27
5	TIGHTNER ROD	2	060-00-22
4	BEARING HOLDER (CHAIN TIGHTNER)	2	060-00-21
3	FLANGE BEARING 1-1/8"ID (UCF-206-18)	4	060-00-20
2	CONVEYOR FLOOR	1	060-00-14
1	ADJUSTABLE FLOOR	1	060-00-01
NO.	PART DESC.	QTY	PART NO.

PARTS LIST

MODEL:	ALL APPLICABLE	
DATE:	AUG 1/03	SHEET 3 of 3
PART/ASSEMBLY NO:	060-04-02	



TITLE: 8' (96") DUAL DISCHARGE CONVEYOR ASSEMBLY: COMPLETE W/O APRON CHAIN, SHIELDS, AND HOSES



NOTE:

- FOR APRON CHAIN ASSEMBLY REPLACEMENT PARTS, REFER TO DRAWING #060-01-05.

- ⊖ # - DENOTES INDIVIDUAL PART
- ⊖ # - DENOTES ASSEMBLY/SUB-ASSEMBLY

2	COMPLETE APRON CHAIN ASSEMBLY	1	060-05-05
1	9'-2" DUAL CONVEYOR W/O CHAIN	1	060-05-02
NO.	PART DESC.	QTY	PART NO.

PARTS LIST

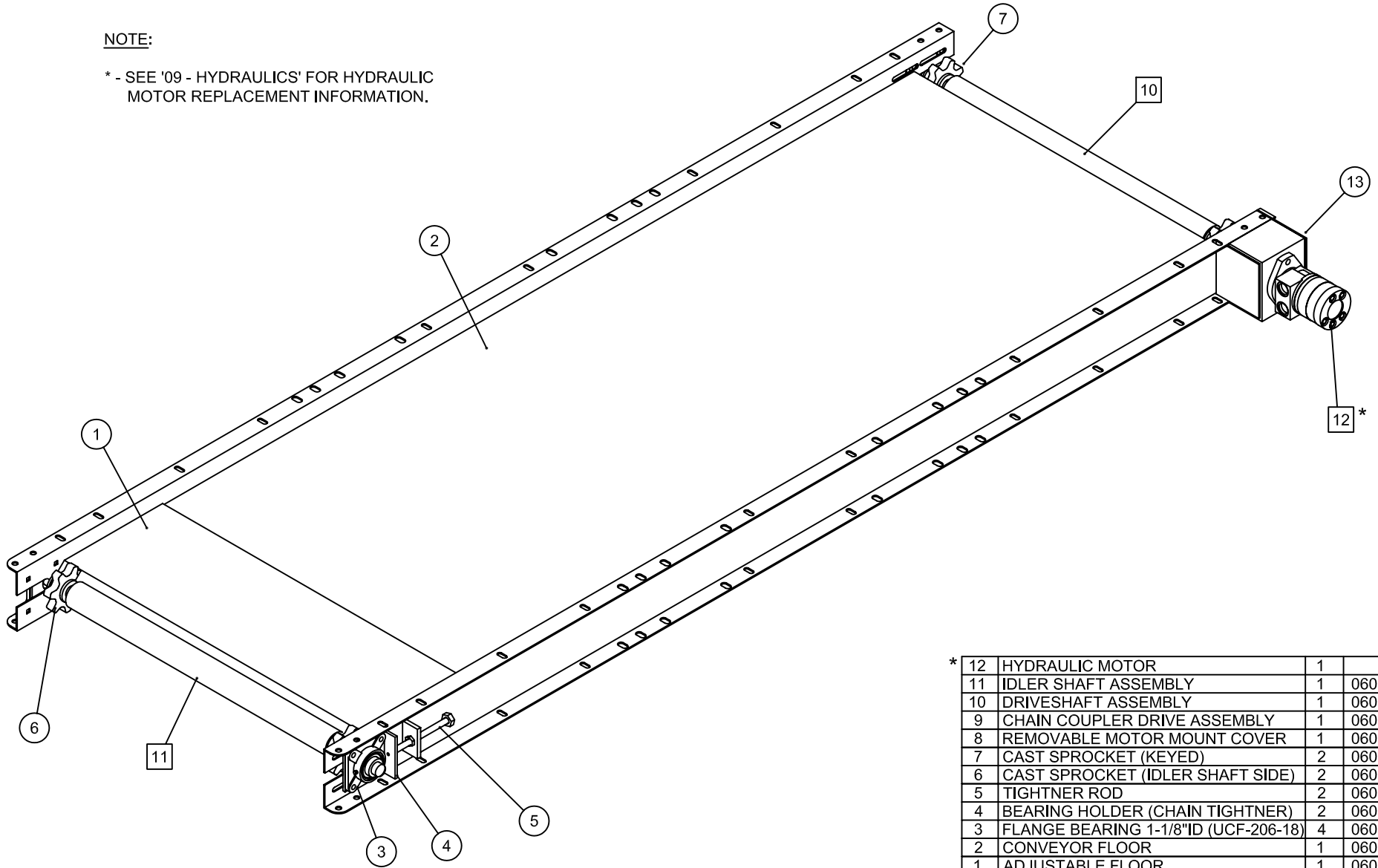
MODEL:		ALL APPLICABLE	
DATE:	AUG 1/03	SHEET	1 of 1
PART/ASSEMBLY NO:	060-05-01		



TITLE: 9'-2" (110") DUAL DISCHARGE CONVEYOR ASSEMBLY - COMPLETE W/O SHIELDS AND HOSES

NOTE:

* - SEE '09 - HYDRAULICS' FOR HYDRAULIC MOTOR REPLACEMENT INFORMATION.



⊖ # - DENOTES INDIVIDUAL PART
 ⊖ # - DENOTES ASSEMBLY/SUB-ASSEMBLY

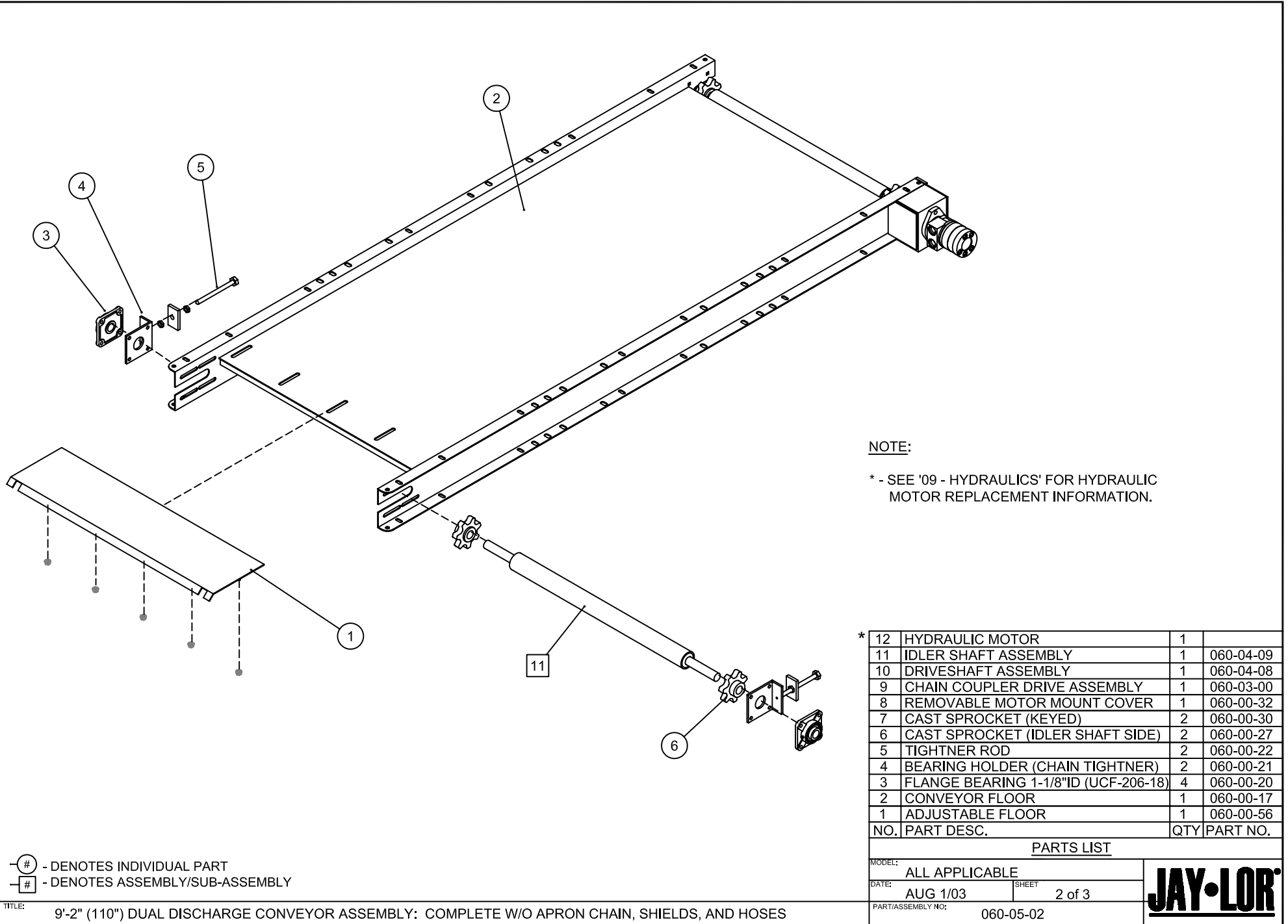
* 12	HYDRAULIC MOTOR	1	
11	IDLER SHAFT ASSEMBLY	1	060-04-09
10	DRIVESHAFT ASSEMBLY	1	060-04-08
9	CHAIN COUPLER DRIVE ASSEMBLY	1	060-03-00
8	REMOVABLE MOTOR MOUNT COVER	1	060-00-32
7	CAST SPROCKET (KEYED)	2	060-00-30
6	CAST SPROCKET (IDLER SHAFT SIDE)	2	060-00-27
5	TIGHTNER ROD	2	060-00-22
4	BEARING HOLDER (CHAIN TIGHTNER)	2	060-00-21
3	FLANGE BEARING 1-1/8"ID (UCF-206-18)	4	060-00-20
2	CONVEYOR FLOOR	1	060-00-17
1	ADJUSTABLE FLOOR	1	060-00-56
NO.	PART DESC.	QTY	PART NO.

PARTS LIST

MODEL: ALL APPLICABLE
 DATE: AUG 1/03 SHEET 1 of 3
 PART/ASSEMBLY NO: 060-05-02



TITLE: 9'-2" (110") DUAL DISCHARGE CONVEYOR ASSEMBLY: COMPLETE W/O APRON CHAIN, SHIELDS, AND HOSES



NOTE:

* - SEE '09 - HYDRAULICS' FOR HYDRAULIC MOTOR REPLACEMENT INFORMATION.

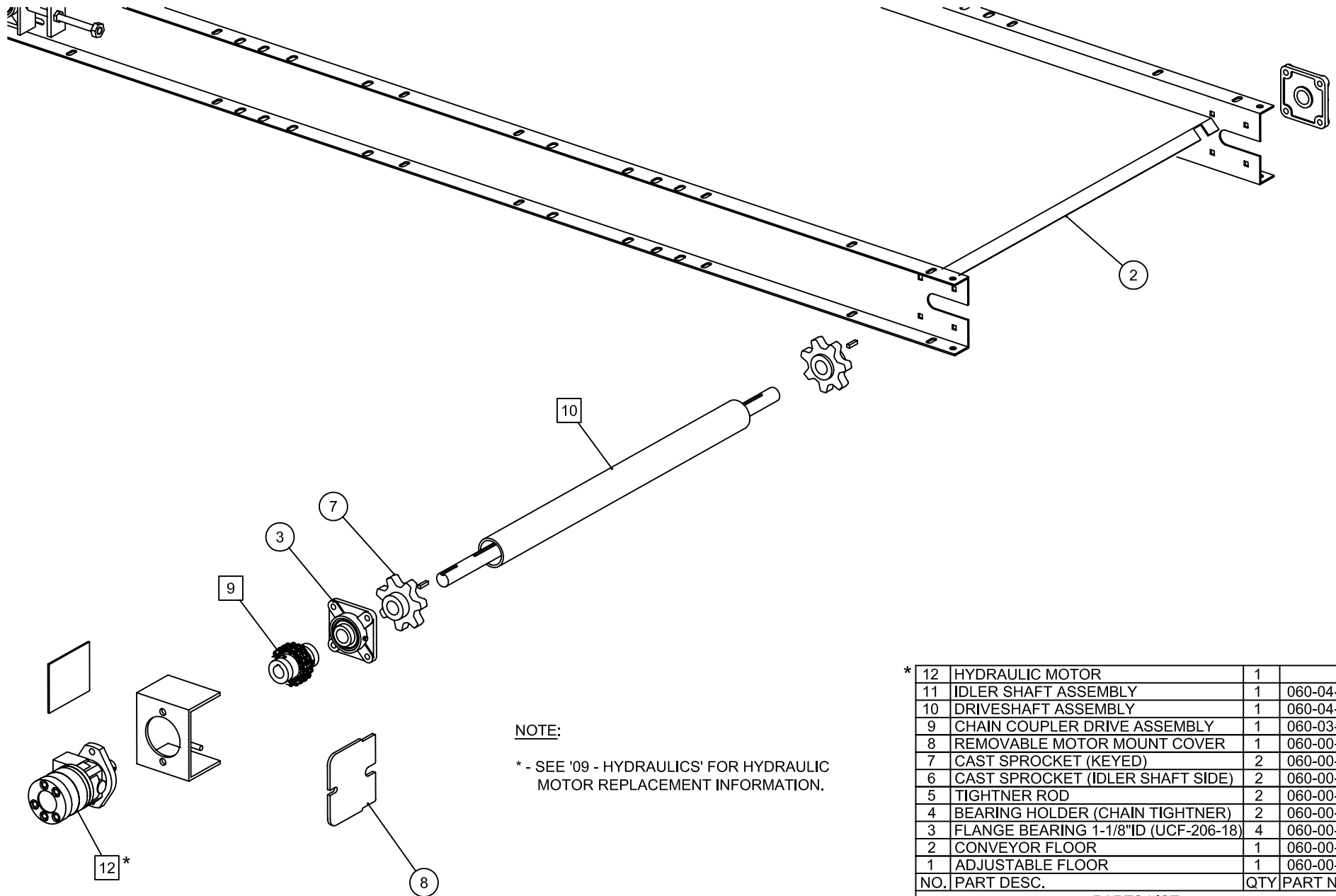
NO.	PART DESC.	QTY	PART NO.
* 12	HYDRAULIC MOTOR	1	
11	IDLER SHAFT ASSEMBLY	1	060-04-09
10	DRIVESHAFT ASSEMBLY	1	060-04-08
9	CHAIN COUPLER DRIVE ASSEMBLY	1	060-03-00
8	REMOVABLE MOTOR MOUNT COVER	1	060-00-32
7	CAST SPROCKET (KEYED)	2	060-00-30
6	CAST SPROCKET (IDLER SHAFT SIDE)	2	060-00-27
5	TIGHTNER ROD	2	060-00-22
4	BEARING HOLDER (CHAIN TIGHTNER)	2	060-00-21
3	FLANGE BEARING 1-1/8"ID (UCF-206-18)	4	060-00-20
2	CONVEYOR FLOOR	1	060-00-17
1	ADJUSTABLE FLOOR	1	060-00-56
			PARTS LIST

⊖# - DENOTES INDIVIDUAL PART
 ⊖# - DENOTES ASSEMBLY/SUB-ASSEMBLY

TITLE: 9'-2" (110") DUAL DISCHARGE CONVEYOR ASSEMBLY: COMPLETE W/O APRON CHAIN, SHIELDS, AND HOSES

MODEL: ALL APPLICABLE
 DATE: AUG 1/03 SHEET 2 of 3
 PART/ASSEMBLY NO: 060-05-02





NOTE:

* - SEE '09 - HYDRAULICS' FOR HYDRAULIC MOTOR REPLACEMENT INFORMATION.

- ⊖ # - DENOTES INDIVIDUAL PART
- ⊖ # - DENOTES ASSEMBLY/SUB-ASSEMBLY

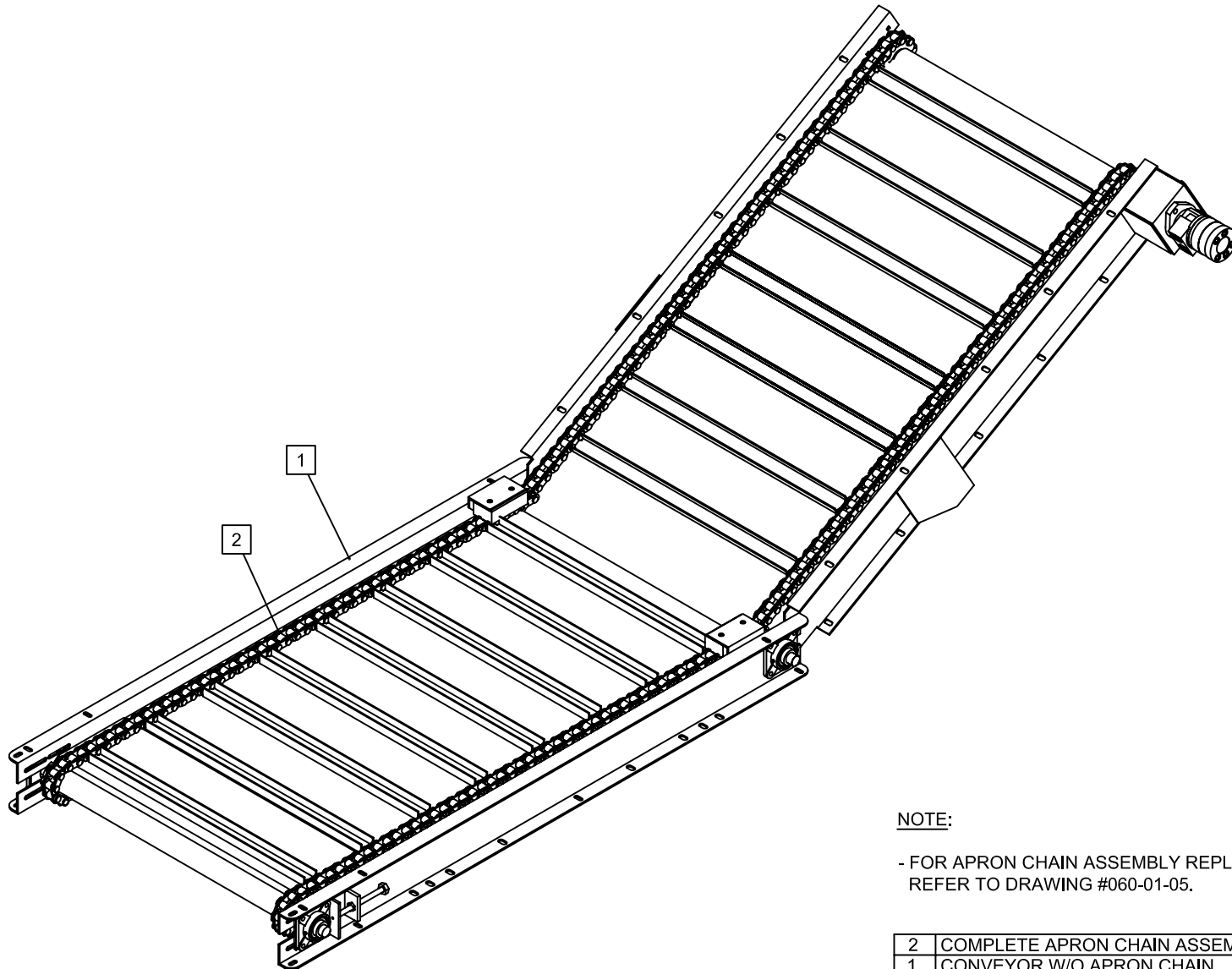
NO.	PART DESC.	QTY	PART NO.
* 12	HYDRAULIC MOTOR	1	
11	IDLER SHAFT ASSEMBLY	1	060-04-09
10	DRIVESHAFT ASSEMBLY	1	060-04-08
9	CHAIN COUPLER DRIVE ASSEMBLY	1	060-03-00
8	REMOVABLE MOTOR MOUNT COVER	1	060-00-32
7	CAST SPROCKET (KEYED)	2	060-00-30
6	CAST SPROCKET (IDLER SHAFT SIDE)	2	060-00-27
5	TIGHTNER ROD	2	060-00-22
4	BEARING HOLDER (CHAIN TIGHTNER)	2	060-00-21
3	FLANGE BEARING 1-1/8"ID (UCF-206-18)	4	060-00-20
2	CONVEYOR FLOOR	1	060-00-17
1	ADJUSTABLE FLOOR	1	060-00-56

PARTS LIST

MODEL:		ALL APPLICABLE
DATE:	AUG 1/03	SHEET 3 of 3
PART/ASSEMBLY NO:	060-05-02	



TITLE: 9'-2" (110") DUAL DISCHARGE CONVEYOR ASSEMBLY: COMPLETE W/O APRON CHAIN, SHIELDS, AND HOSES



NOTE:

- FOR APRON CHAIN ASSEMBLY REPLACEMENT PARTS, REFER TO DRAWING #060-01-05.

2	COMPLETE APRON CHAIN ASSEMBLY	1	060-06-05
1	CONVEYOR W/O APRON CHAIN	1	060-06-02
NO.	PART DESC.	QTY	PART NO.

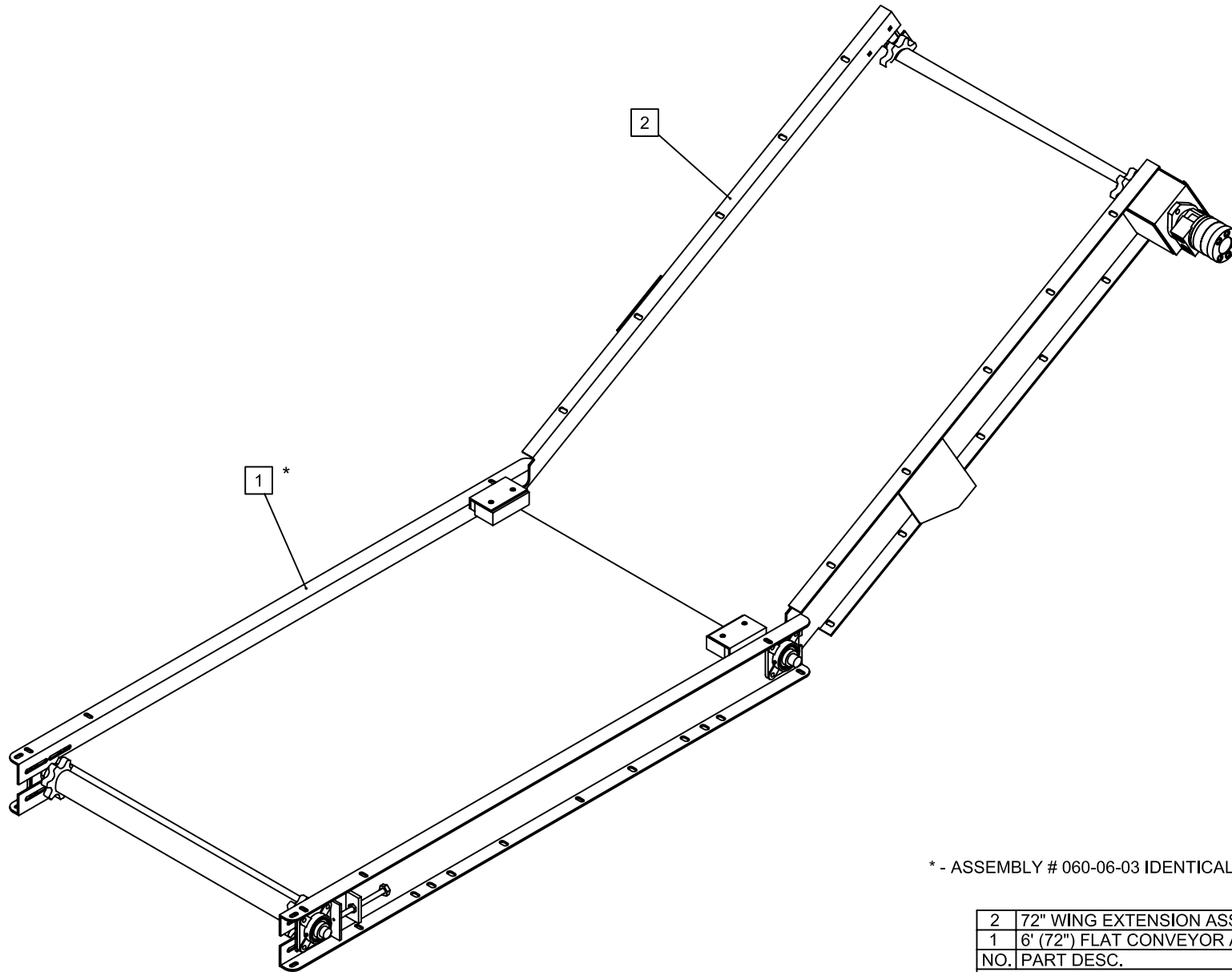
PARTS LIST

MODEL:		ALL APPLICABLE	
DATE:	AUG 1/03	SHEET	1 of 1
PART/ASSEMBLY NO:		060-06-01	



- ⊖ # - DENOTES INDIVIDUAL PART
- ⊖ # - DENOTES ASSEMBLY/SUB-ASSEMBLY

TITLE: 6' CONVEYOR W/ 72" WING EXTENSION: COMPLETE W/O SHIELDS, AND HOSES



* - ASSEMBLY # 060-06-03 IDENTICAL TO ASSEMBLY # 060-08-03.

⊖ # - DENOTES INDIVIDUAL PART
 ⊞ # - DENOTES ASSEMBLY/SUB-ASSEMBLY

2	72" WING EXTENSION ASSEMBLY	1	060-06-04
1	6' (72") FLAT CONVEYOR ASSEMBLY*	1	060-06-03
NO.	PART DESC.	QTY	PART NO.

PARTS LIST

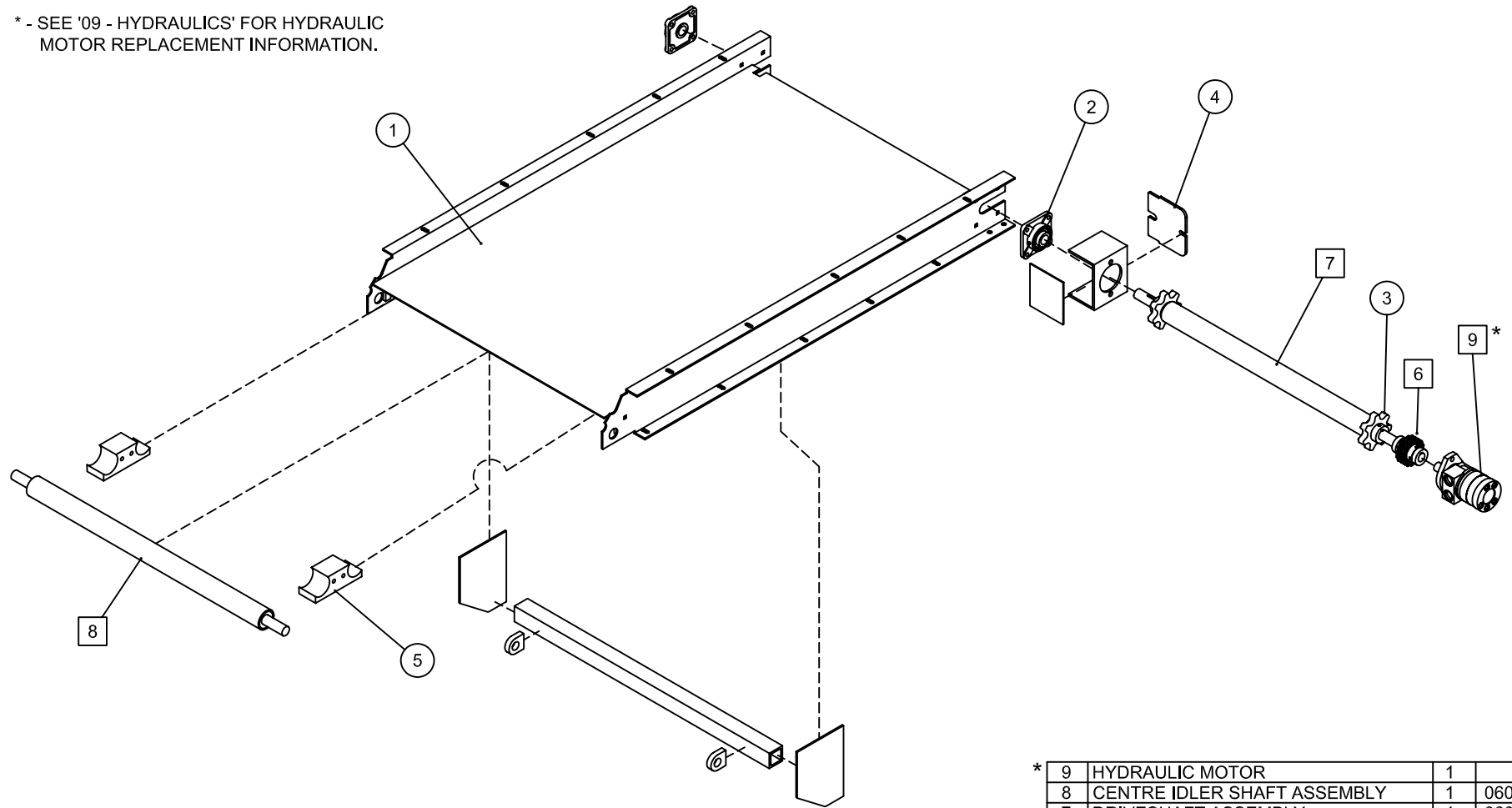
MODEL:		ALL APPLICABLE	
DATE:	AUG 1/03	SHEET	1 of 1
PART/ASSEMBLY NO:	060-06-02		



TITLE: 6' CONVEYOR W/ 72" WING EXTENSION: COMPLETE ASSEMBLY W/O APRON CHAIN, SHIELDS, AND HOSES

NOTE:

* - SEE '09 - HYDRAULICS' FOR HYDRAULIC MOTOR REPLACEMENT INFORMATION.



NO.	PART DESC.	QTY	PART NO.
* 9	HYDRAULIC MOTOR	1	
8	CENTRE IDLER SHAFT ASSEMBLY	1	060-06-11
7	DRIVESHAFT ASSEMBLY	1	060-06-08
6	CHAIN COUPLER DRIVE ASSEMBLY	1	060-03-00
5	LOWER TEFLON BLOCK	2	060-00-38
4	REMOVABLE MOTOR MOUNT COVER	1	060-00-32
3	CAST SPROCKET (KEYED)	2	060-00-30
2	FLANGE BEARING 1-1/8"ID (UCF-206-18)	2	060-00-20
1	WING CONVEYOR FLOOR	1	060-00-65

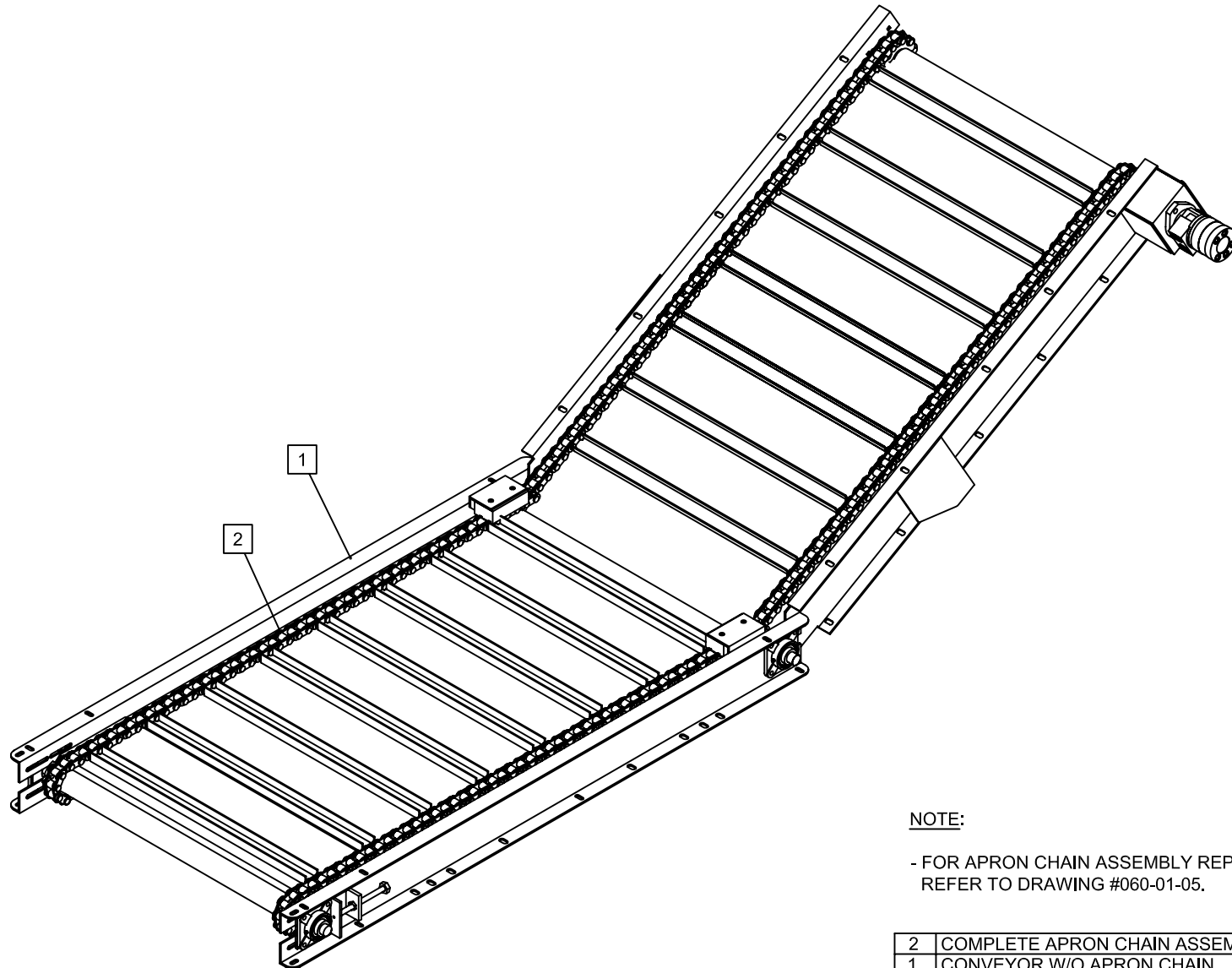
PARTS LIST

MODEL:		ALL APPLICABLE
DATE:	AUG 1/03	SHEET 1 of 1
PART/ASSEMBLY NO:	060-06-04	



⊖# - DENOTES INDIVIDUAL PART
 ⊞# - DENOTES ASSEMBLY/SUB-ASSEMBLY

TITLE: 72" WING EXTENSION CONVEYOR ASSEMBLY



NOTE:

- FOR APRON CHAIN ASSEMBLY REPLACEMENT PARTS, REFER TO DRAWING #060-01-05.

2	COMPLETE APRON CHAIN ASSEMBLY	1	060-07-05
1	CONVEYOR W/O APRON CHAIN	1	060-07-02
NO.	PART DESC.	QTY	PART NO.

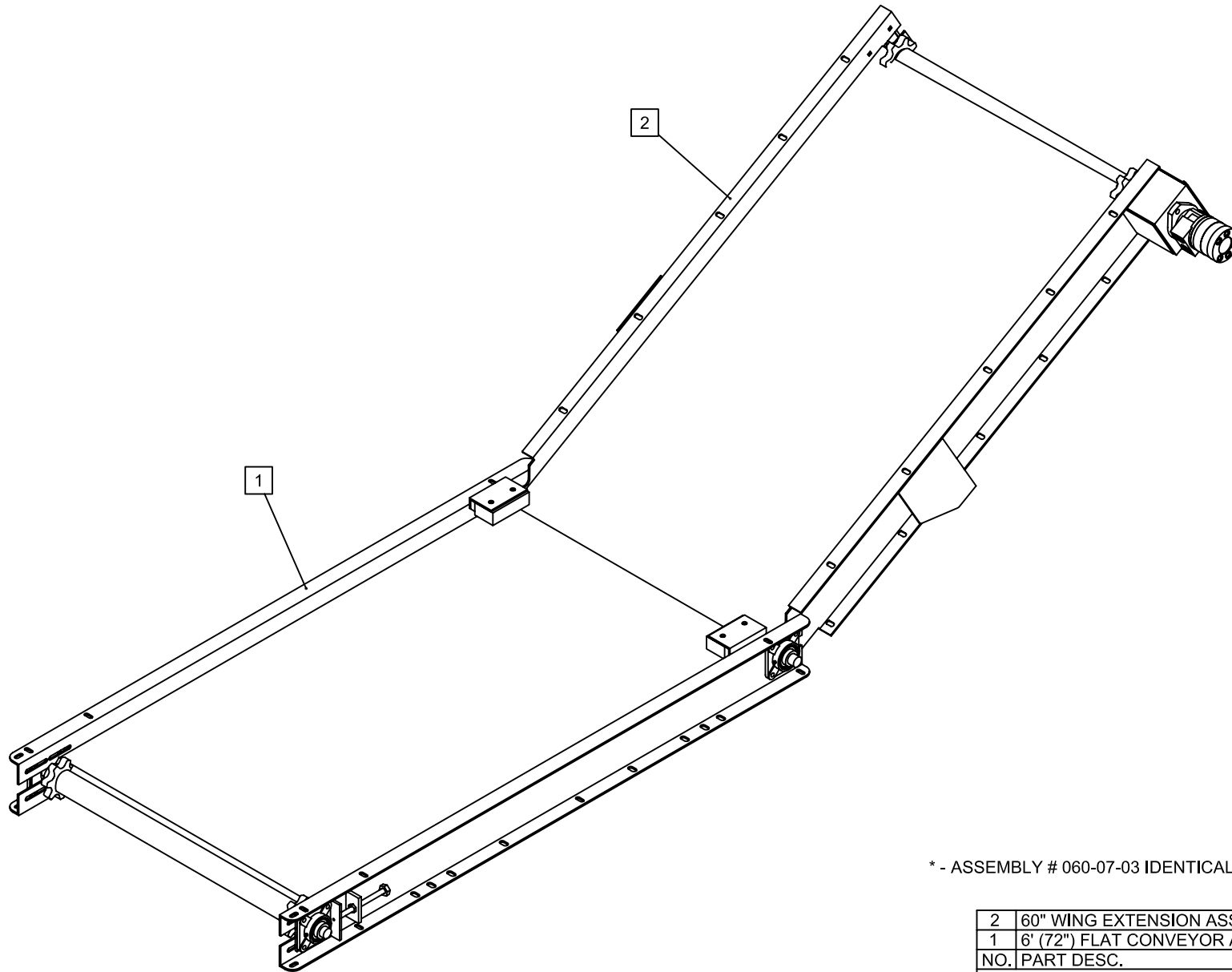
PARTS LIST

MODEL:		ALL APPLICABLE	
DATE:	AUG 1/03	SHEET	1 of 1
PART/ASSEMBLY NO:	060-07-01		



- ⊖ # - DENOTES INDIVIDUAL PART
- ⊖ # - DENOTES ASSEMBLY/SUB-ASSEMBLY

TITLE: 6' CONVEYOR W/ 60" WING EXTENSION: COMPLETE W/O SHIELDS, AND HOSES



* - ASSEMBLY # 060-07-03 IDENTICAL TO ASSEMBLY # 060-08-03.

- ⊖ # - DENOTES INDIVIDUAL PART
- ⊖ # - DENOTES ASSEMBLY/SUB-ASSEMBLY

2	60" WING EXTENSION ASSEMBLY	1	060-07-04
1	6' (72") FLAT CONVEYOR ASSEMBLY*	1	060-07-03
NO.	PART DESC.	QTY	PART NO.

PARTS LIST

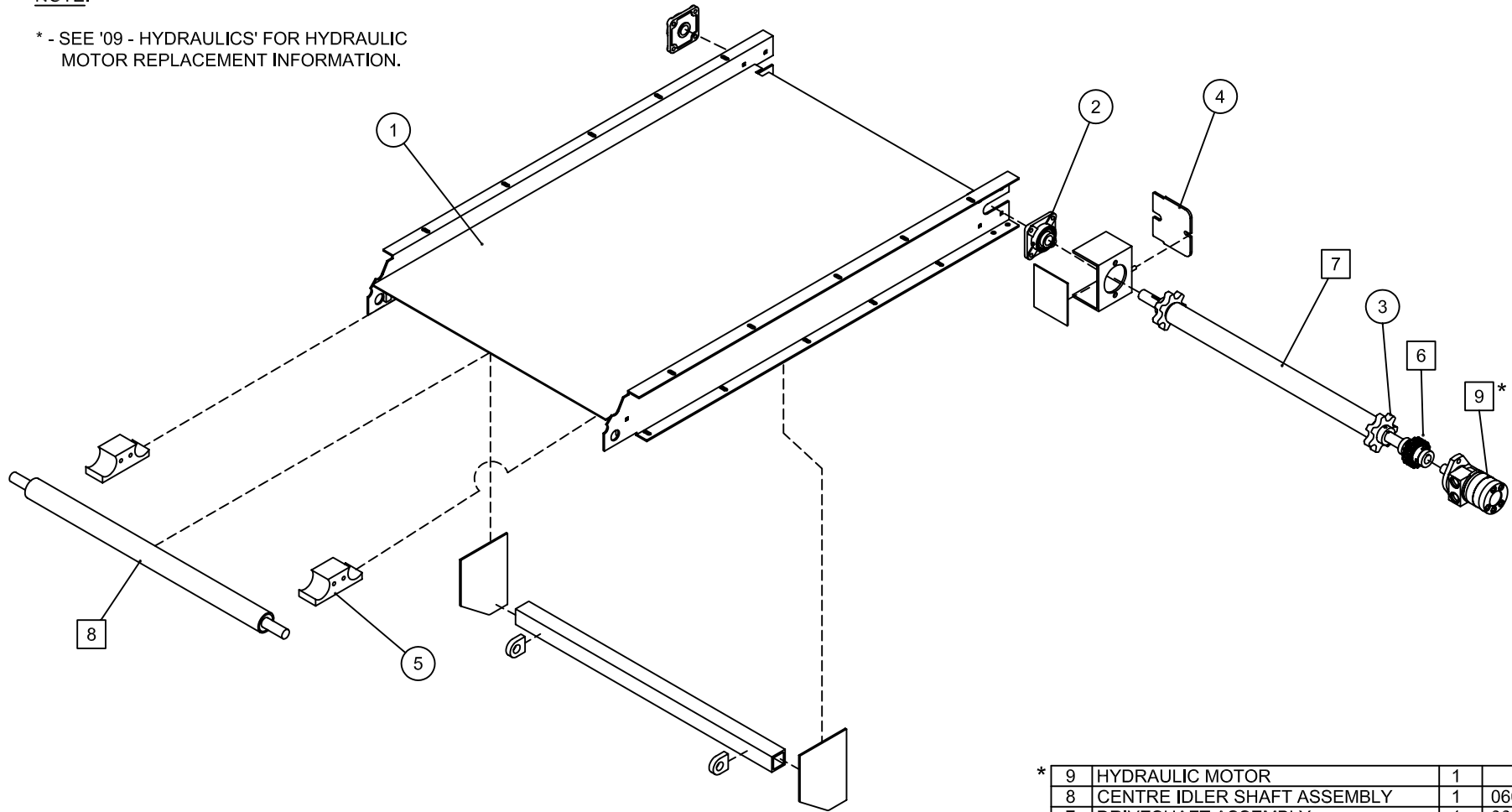
MODEL: ALL APPLICABLE	
DATE: AUG 1/03	SHEET 1 of 1
PART/ASSEMBLY NO: 060-07-02	



TITLE: 6' CONVEYOR W/ 60" WING EXTENSION: COMPLETE ASSEMBLY W/O APRON CHAIN, SHIELDS, AND HOSES

NOTE:

* - SEE '09 - HYDRAULICS' FOR HYDRAULIC MOTOR REPLACEMENT INFORMATION.



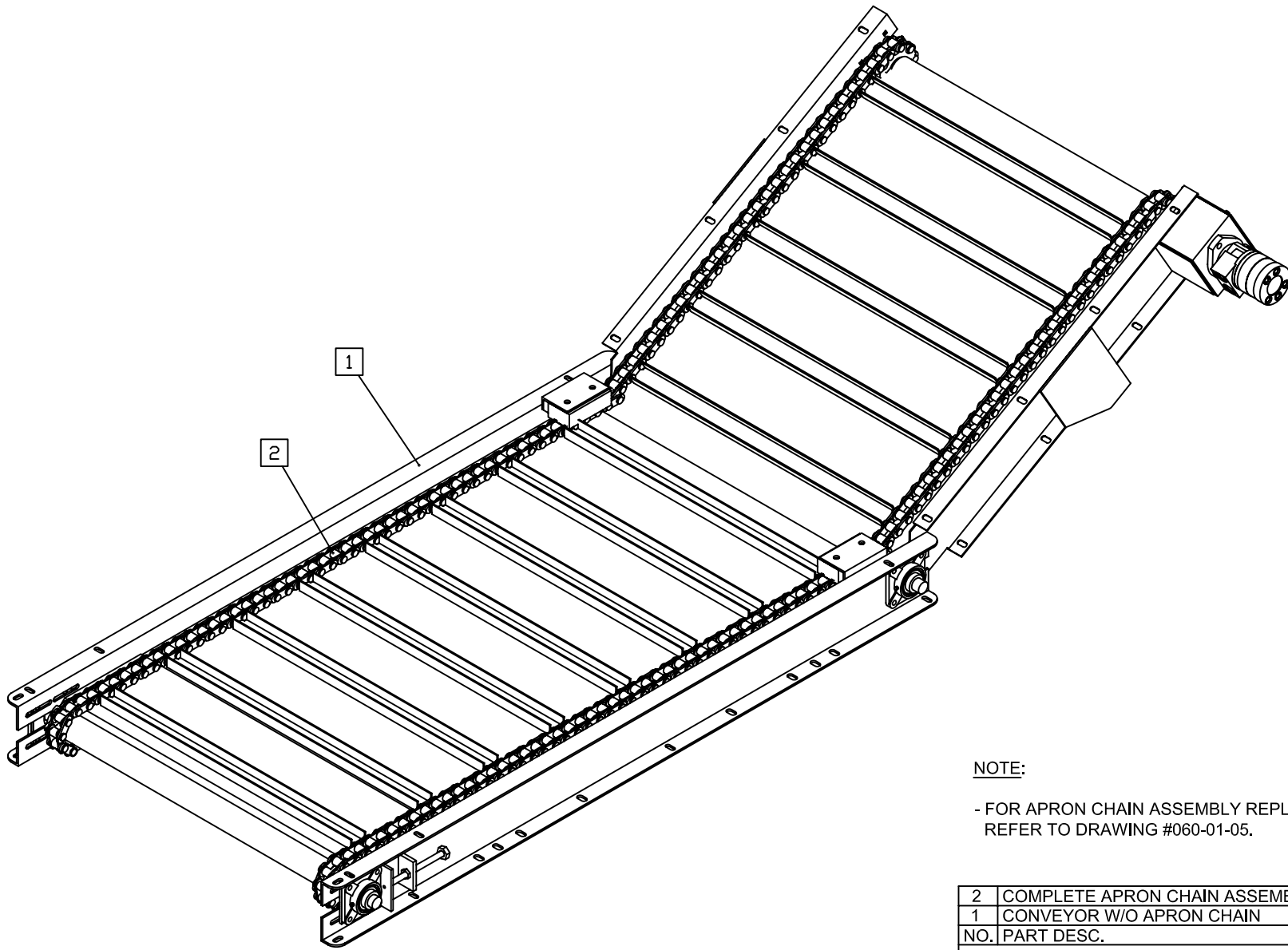
NO.	PART DESC.	QTY	PART NO.
* 9	HYDRAULIC MOTOR	1	
8	CENTRE IDLER SHAFT ASSEMBLY	1	060-07-11
7	DRIVESHAFT ASSEMBLY	1	060-07-08
6	CHAIN COUPLER DRIVE ASSEMBLY	1	060-03-00
5	LOWER TEFLON BLOCK	2	060-00-38
4	REMOVABLE MOTOR MOUNT COVER	1	060-00-32
3	CAST SPROCKET (KEYED)	2	060-00-30
2	FLANGE BEARING 1-1/8"ID (UCF-206-18)	2	060-00-20
1	WING CONVEYOR FLOOR	1	060-00-11

⊖# - DENOTES INDIVIDUAL PART
 ⊖# - DENOTES ASSEMBLY/SUB-ASSEMBLY

PARTS LIST	
MODEL:	ALL APPLICABLE
DATE:	AUG 1/03
SHEET:	1 of 1
PART/ASSEMBLY NO.:	060-07-04



TITLE: 60" WING EXTENSION CONVEYOR ASSEMBLY



NOTE:

- FOR APRON CHAIN ASSEMBLY REPLACEMENT PARTS, REFER TO DRAWING #060-01-05.

2	COMPLETE APRON CHAIN ASSEMBLY	1	060-08-05
1	CONVEYOR W/O APRON CHAIN	1	060-08-02
NO.	PART DESC.	QTY	PART NO.

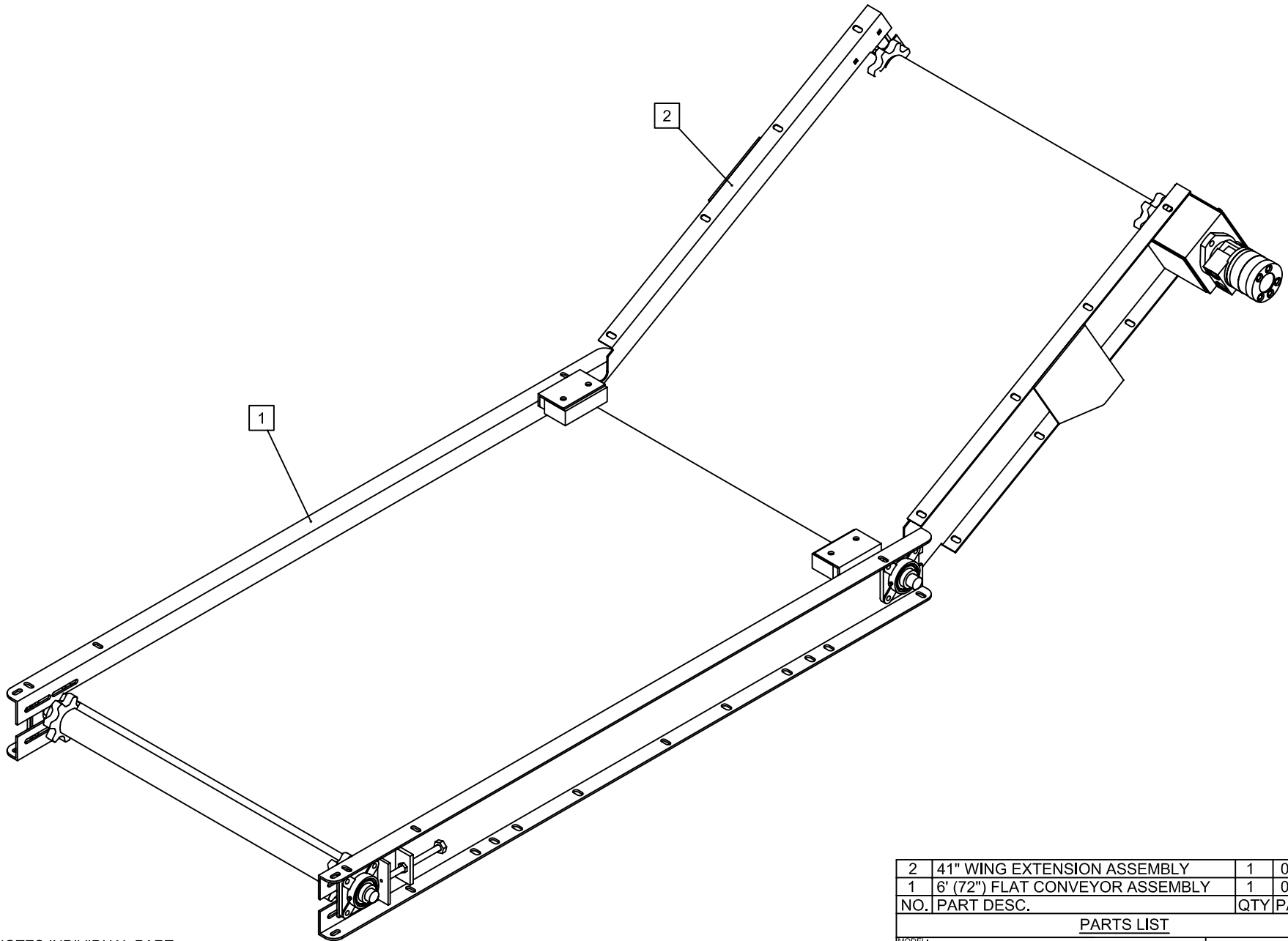
PARTS LIST

MODEL:		ALL APPLICABLE	
DATE:	AUG 1/03	SHEET	1 of 1
PART/ASSEMBLY NO:		060-08-01	



- ⊖ # - DENOTES INDIVIDUAL PART
- ⊖ # - DENOTES ASSEMBLY/SUB-ASSEMBLY

TITLE: 6' CONVEYOR W/ 41" WING EXTENSION: COMPLETE W/O SHIELDS, AND HOSES



⊖ # - DENOTES INDIVIDUAL PART
 ⊞ # - DENOTES ASSEMBLY/SUB-ASSEMBLY

2	41" WING EXTENSION ASSEMBLY	1	060-08-04
1	6' (72") FLAT CONVEYOR ASSEMBLY	1	060-08-03
NO.	PART DESC.	QTY	PART NO.

PARTS LIST

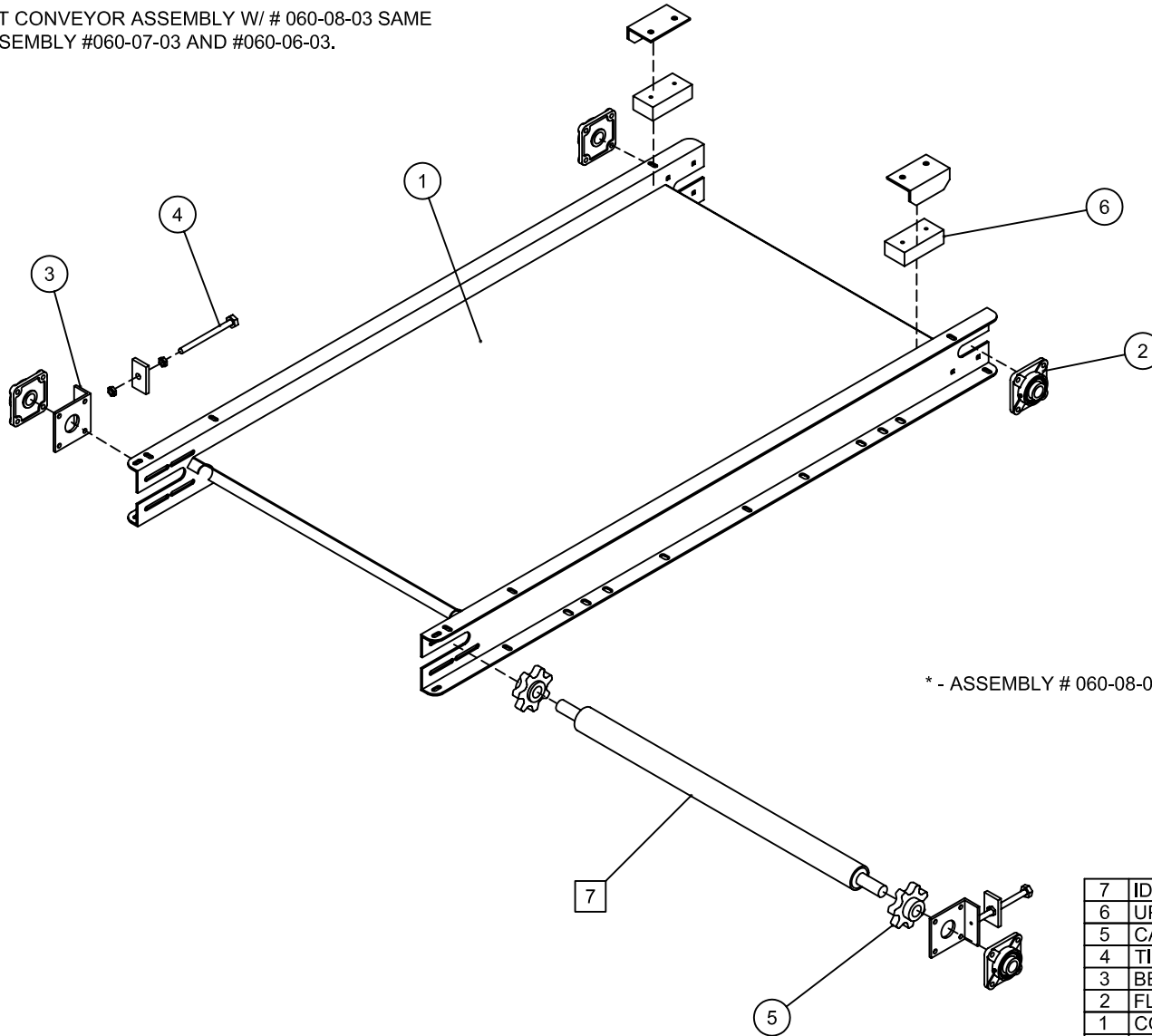
MODEL: ALL APPLICABLE	
DATE: AUG 1/03	SHEET 1 of 1
PART/ASSEMBLY NO: 060-08-02	



TITLE: 6' CONVEYOR W/ 41" WING EXTENSION: COMPLETE ASSEMBLY W/O APRON CHAIN, SHIELDS, AND HOSES

NOTE:

- 6' FLAT CONVEYOR ASSEMBLY W/ # 060-08-03 SAME AS ASSEMBLY #060-07-03 AND #060-06-03.



* - ASSEMBLY # 060-08-09 ALSO HAS ASSEMBLY # 060-07-09 & # 060-06-09.

NO.	PART DESC.	QTY	PART NO.
7	IDLER SHAFT ASSEMBLY*	1	060-08-09
6	UPPER TEFLON BLOCK	2	060-00-37
5	CAST SPROCKET (IDLER SHAFT SIDE)	2	060-00-27
4	TIGHTNER ROD	2	060-00-22
3	BEARING HOLDER (CHAIN TIGHTNER)	2	060-00-21
2	FLANGE BEARING 1-1/8"ID (UCF-206-18)	4	060-00-20
1	CONVEYOR FLOOR	1	060-00-05

PARTS LIST

MODEL:		ALL APPLICABLE	
DATE:	AUG 1/03	SHEET	1 of 1
PART/ASSEMBLY NO:	060-08-03		

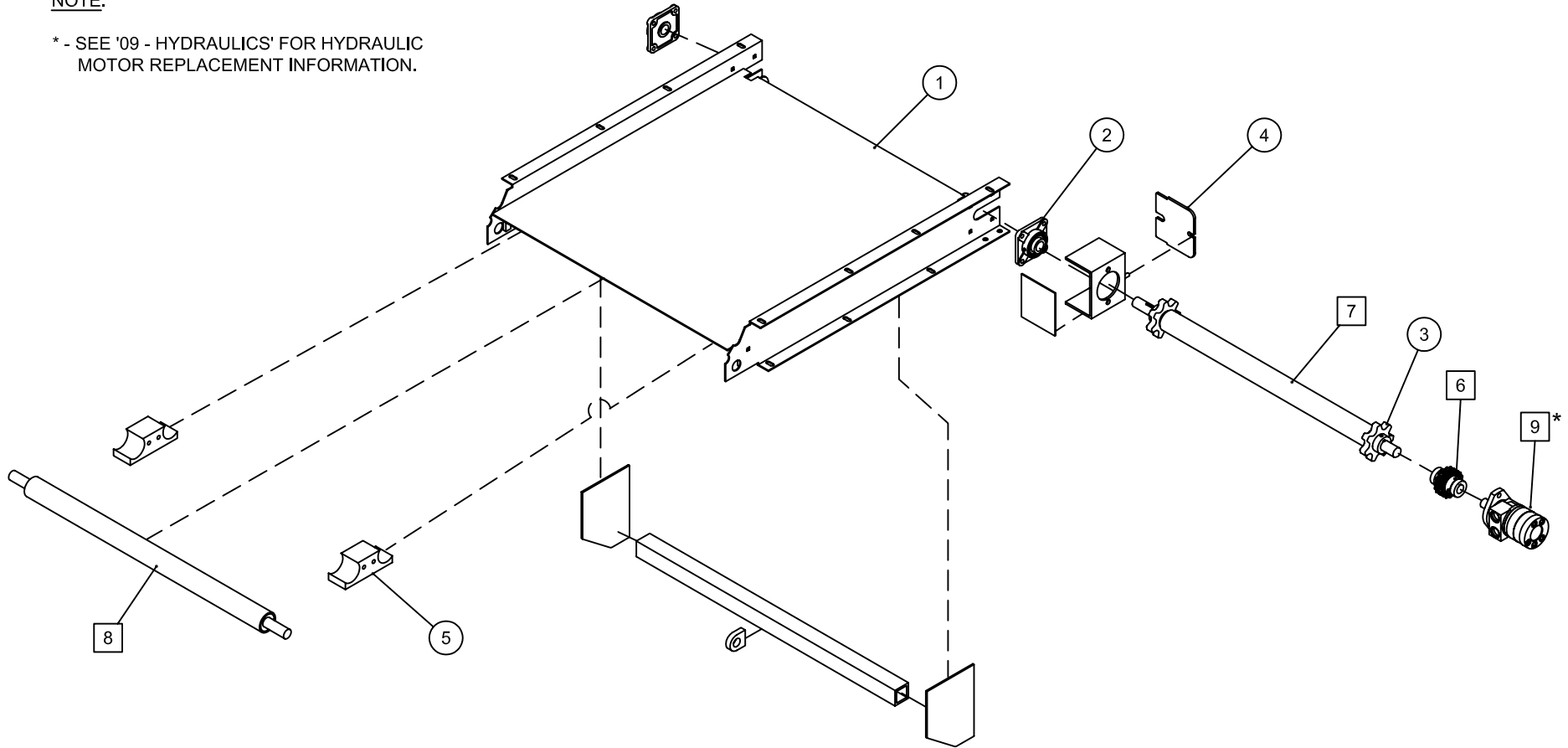


⊖ # - DENOTES INDIVIDUAL PART
 ⊞ # - DENOTES ASSEMBLY/SUB-ASSEMBLY

TITLE: 6' (72") FLAT CONVEYOR ASSEMBLY (W/O WING EXTENSION OPTION, ALSO HAS PART # 060-07-03 & # 060-06-03)

NOTE:

* - SEE '09 - HYDRAULICS' FOR HYDRAULIC MOTOR REPLACEMENT INFORMATION.



NO.	PART DESC.	QTY	PART NO.
* 9	HYDRAULIC MOTOR	1	
8	CENTRE IDLER SHAFT ASSEMBLY	1	060-08-11
7	DRIVESHAFT ASSEMBLY	1	060-08-08
6	CHAIN COUPLER DRIVE ASSEMBLY	1	060-03-00
5	LOWER TEFLON BLOCK	2	060-00-38
4	REMOVABLE MOTOR MOUNT COVER	1	060-00-32
3	CAST SPROCKET (KEYED)	2	060-00-30
2	FLANGE BEARING 1-1/8"ID (UCF-206-18)	2	060-00-20
1	WING CONVEYOR FLOOR	1	060-00-08

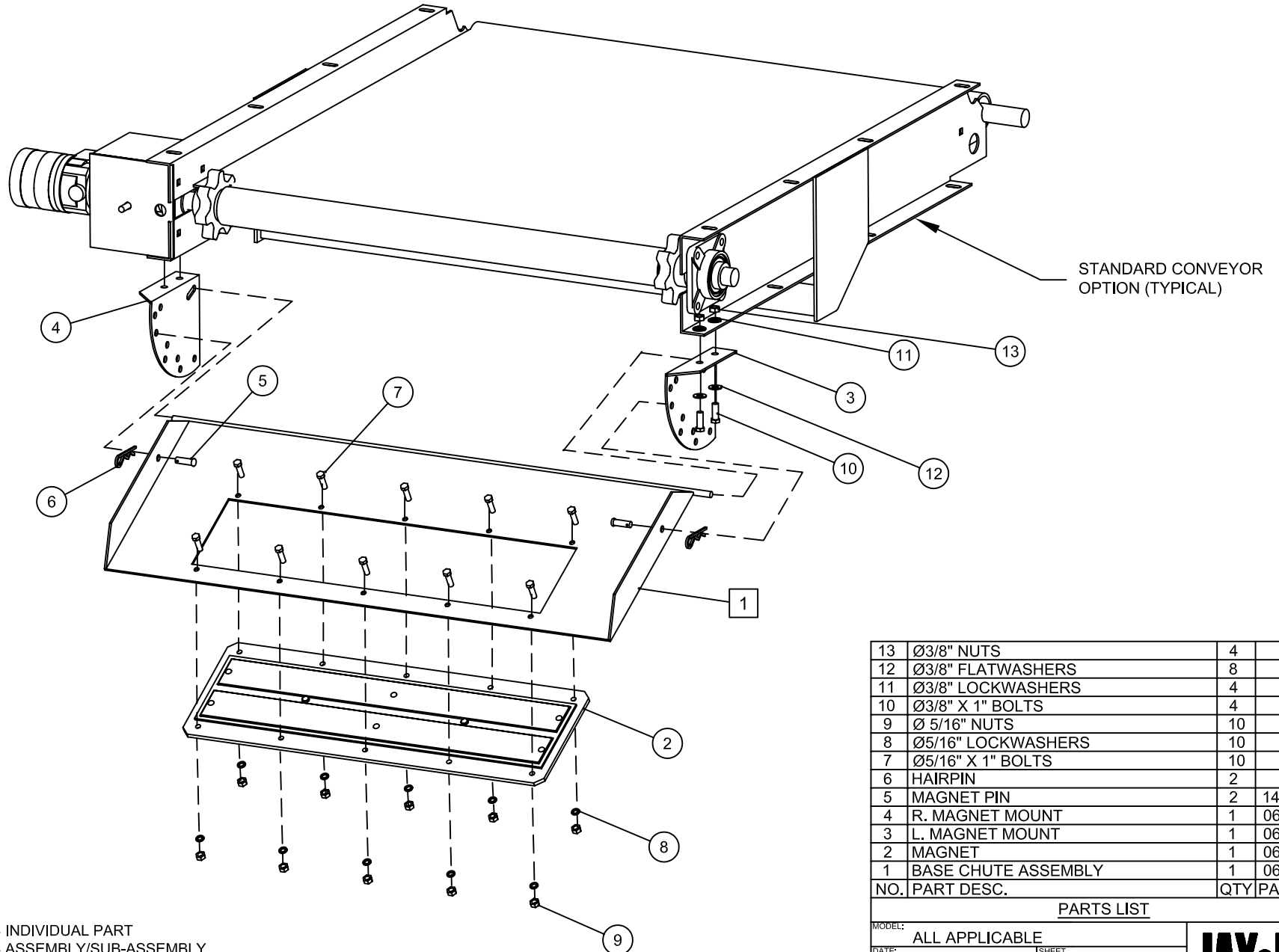
PARTS LIST

MODEL:		ALL APPLICABLE
DATE:	AUG 1/03	SHEET 1 of 1
PART/ASSEMBLY NO:	060-08-04	



⊖ # - DENOTES INDIVIDUAL PART
 ⊖ # - DENOTES ASSEMBLY/SUB-ASSEMBLY

TITLE: 41" WING EXTENSION CONVEYOR ASSEMBLY



13	Ø3/8" NUTS	4	
12	Ø3/8" FLATWASHERS	8	
11	Ø3/8" LOCKWASHERS	4	
10	Ø3/8" X 1" BOLTS	4	
9	Ø 5/16" NUTS	10	
8	Ø5/16" LOCKWASHERS	10	
7	Ø5/16" X 1" BOLTS	10	
6	HAIRPIN	2	
5	MAGNET PIN	2	140-00-94
4	R. MAGNET MOUNT	1	060-12-05
3	L. MAGNET MOUNT	1	060-12-04
2	MAGNET	1	060-12-03
1	BASE CHUTE ASSEMBLY	1	060-12-01
NO.	PART DESC.	QTY	PART NO.

PARTS LIST

MODEL:	ALL APPLICABLE	
DATE:	AUG 1/03	SHEET 1 of 1
PART/ASSEMBLY NO:	060-12-00	



⊖# - DENOTES INDIVIDUAL PART
 ⊞# - DENOTES ASSEMBLY/SUB-ASSEMBLY

TITLE: ADJUSTABLE MAGNET CHUTE ASSEMBLY FOR STANDARD CONVEYORS